

Dedicated to Delivery
Nasco **Life/form**®

Chest Tube Manikin LF03770U Instruction Manual



ISO 9001 and
ISO 13485

Nasco Plastics
ISO 9001 and ISO 13485

Products are manufactured using a quality management system certified as being in conformity with ISO 9001 and ISO 13485.

Life/form®

5

Year

Warranty

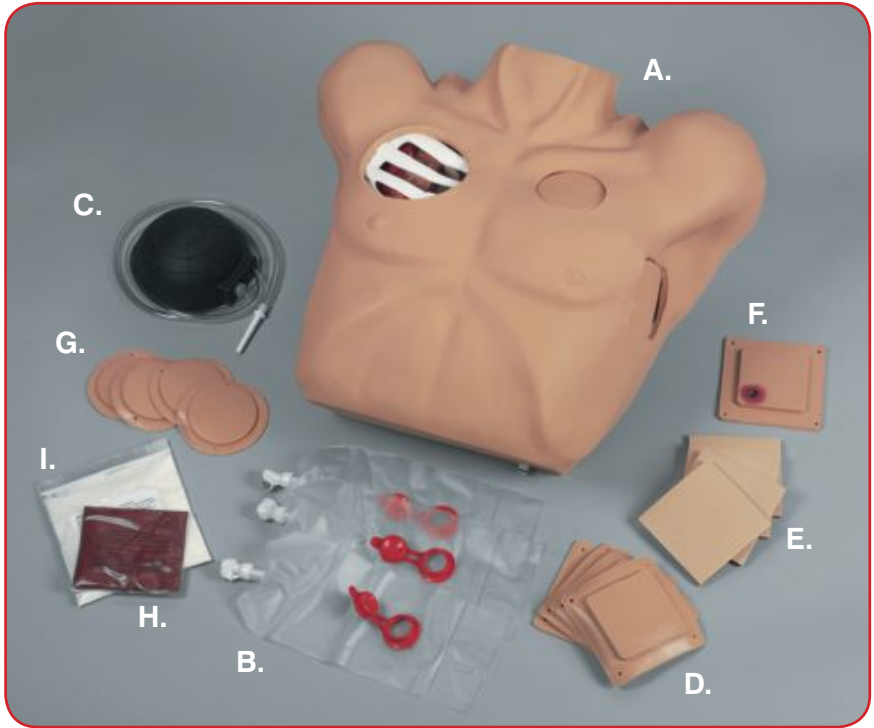
Life/form® Products by Nasco

About the Manikin

The Nasco **Life/form**® Chest Tube Manikin has been designed specifically to teach the theory, anatomy, and skills needed to manage pre-hospital chest trauma, as well as ongoing chest tube maintenance.



The right side of the manikin has two cutaway viewing areas to illustrate the anatomical relationships between the skin surface, musculature, ribs, and lungs. The left side has a pressurized tension pneumothorax site and a site for the surgical placement of a functional chest tube. Fluid color, volume, and viscosity can be controlled by the instructor. The manikin may be used with any commercially available closed water seal drainage unit (not included).



List of Components

- A. Torso with Lung (assembled)
- B. Fluid Reservoir Bag (3)
- C. Foot Pump (1)
- D. Surgical Skin Pads (5)
- E. Subcutaneous Surgical Pads (5)
- F. Nurse Training Pad (1)
- G. Pneumothorax Pads (5)
- H. Blood Powder (1 pack)
- I. Methyl Cellulose Thickener (1 pack)

Setting Up the Trainer

Pneumothorax Site

Plug the foot pump hose into the top port in the base of the trainer. (See **figure 1.**) Pump several times to fill the inner air bladder. (The bladder has a pressure relief valve to prevent overinflation and rupture.) The procedure may now be performed at the second intercostal space, midclavicular line. While the pneumothorax pad may be punctured repeatedly, it will eventually need to be replaced. Simply remove the chest skin overlay and replace the old pad with a new one. (See **figure 2.**)

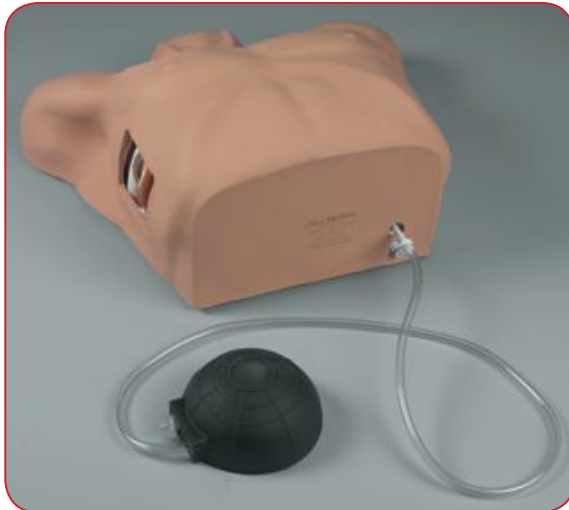


Figure 1



Figure 2



Figure 3



Figure 4

Chest Tube Insertion Site

Fill a reservoir bag with fluid that has been mixed to the desired color and consistency according to the directions on the packet. Connect the bag to the quick-disconnect fitting in the base of the trainer. **(See figure 3.)** The procedure may now be performed using a #32 French chest tube (not included). The site, located at the fifth intercostal space, just anterior to the midaxillary line, consists of an outer surgical skin pad, simulated ribs, and an inner subcutaneous surgical pad. **(See figure 4.)** Each pad can be used four times by rotating it a quarter turn after each procedure. Simply remove the chest skin overlay and the surgical skin pad. Snap out the rib insert. **(See figure 5.)** Turn the subcutaneous surgical pad to a fresh site. Snap in the rib insert, replace the surgical pad in its new position, and replace the chest skin overlay. Discard both pads and insert new ones after four procedures.



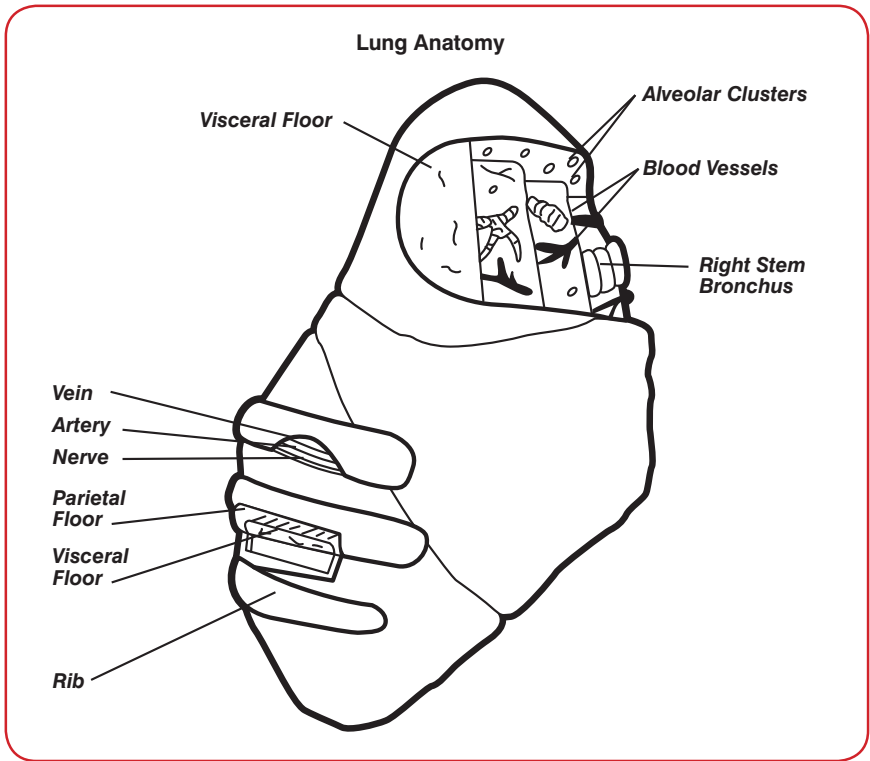
Figure 5

Nurse Training Pad

Designed to fit under the chest skin overlay, the nurse training pad can be used for site care and appliance maintenance. **(See figure 6.)**



Figure 6



Care of the Trainer

1. Normal soil may be removed from the skin with mild soap and water, or with Nasco Cleaner (LF09919U).
2. Never place the skin on any printed material, as the ink will cause indelible stains.
3. Handle synthetic blood with care, as it will stain fabrics, skin, and surfaces.
4. Rinse the fluid reservoir bag thoroughly after each use; leave the cap open so it can dry, especially if it will be stored for any length of time.

Available Supplies

LF03771U	Surgical Skin Pads (Pk/5)
LF03772U	Subcutaneous Surgical Pads (Pk/5)
LF03773U	Pneumothorax Pads (Pk/5)
LF03774U	Methyl Cellulose
LF03775U	Blood Powder
LF09919U	Nasco Cleaner

Actual product may vary slightly from photo. Nasco reserves the right to change product color, materials, or function as needed.

Other Available *Life/form*® Simulators

- LF00698U** Adult Injectible Arm (Light)
LF00855U Male Catheterization
LF00856U Female Catheterization
LF00929U Surgical Bandaging
LF00958U Pediatric Injectible Arm
LF00961U Intramuscular Injection
LF00995U Arterial Puncture Arm
LF00999U Pediatric Injectible Head
LF01005U First Aid Arm
LF01008U Intradermal Injection Arm
LF01012U Heart Catheterization (TPN)
LF01028U Suture Practice Arm
LF01034U Suture Practice Leg
LF01042U Suture Kit
LF01063U Stump Bandaging, Upper
LF01064U Stump Bandaging, Lower
LF01082U Cricothyrotomy
LF01087U Central Venous Cannulation
LF01095U Blood Pressure Arm
LF01108U Infant Intraosseous Infusion
LF01121U Advanced IV Arm
LF01131U Venipuncture and Injection Arm
LF01139U Advanced IV Hand
LF01142U Auscultation Trainer
LF01162U Venatech IV Trainer
LF01184U Venatech IM & Sub Q
LF03000U **CPARLENE**® Series
LF03601U Adult Airway Management Trainer with Stand
LF03602U Adult Airway Management Manikin
LF03609U Child Airway Management Trainer with Stand
LF03616U Child **CRiSis**™ Manikin
LF03617U Deluxe Child **CRiSis**™ Manikin with Arrhythmia Tutor
LF03623U Infant Airway Management Trainer with Stand
LF03632U Child Intraosseous Infusion Femoral Access Leg on a Stand
LF03633U Child Airway Management Trainer Torso
LF03693U **Basic Buddy**® CPR Manikin
LF03699U "Airway Larry" Airway Management Trainer
LF03709U Infant **CRiSis**™ Manikin
LF03720U **Baby Buddy**™ Infant CPR Manikin
LF03750U Bariatric CPR Manikin
LF03769U Pericardiocentesis Simulator
LF03953U **CRiSis**™ Manikin, Complete
LF03955U Deluxe **CRiSis**™ Manikin
LF03956U Deluxe "Plus" **CRiSis**™ Manikin
LF03965U Adult **CRiSis**™ Auscultation Manikin
LF03966U Adult **CRiSis**™ Auscultation Manikin with ECG Simulator
LF04200U Adult Sternal Intraosseous Infusion
LF06001U CPR Prompt® Adult/Child Manikin
LF06012U CPR Prompt® Infant Manikin
LF06200U CPR Prompt® Keychain Rescue Aid
LF06204U CPR Prompt® Rescue and Practice Aid



LF04200U



LF03769U

Nasco Fort Atkinson

901 Janesville Avenue, P.O. Box 901
 Fort Atkinson, Wisconsin 53538-0901
 1.800.558.9595

eNasco.com • E-mail: lifeform@eNasco.com

COPYRIGHT © NASCO 2003 PRINTED IN U.S.A. NP 57-03/RV 8-15